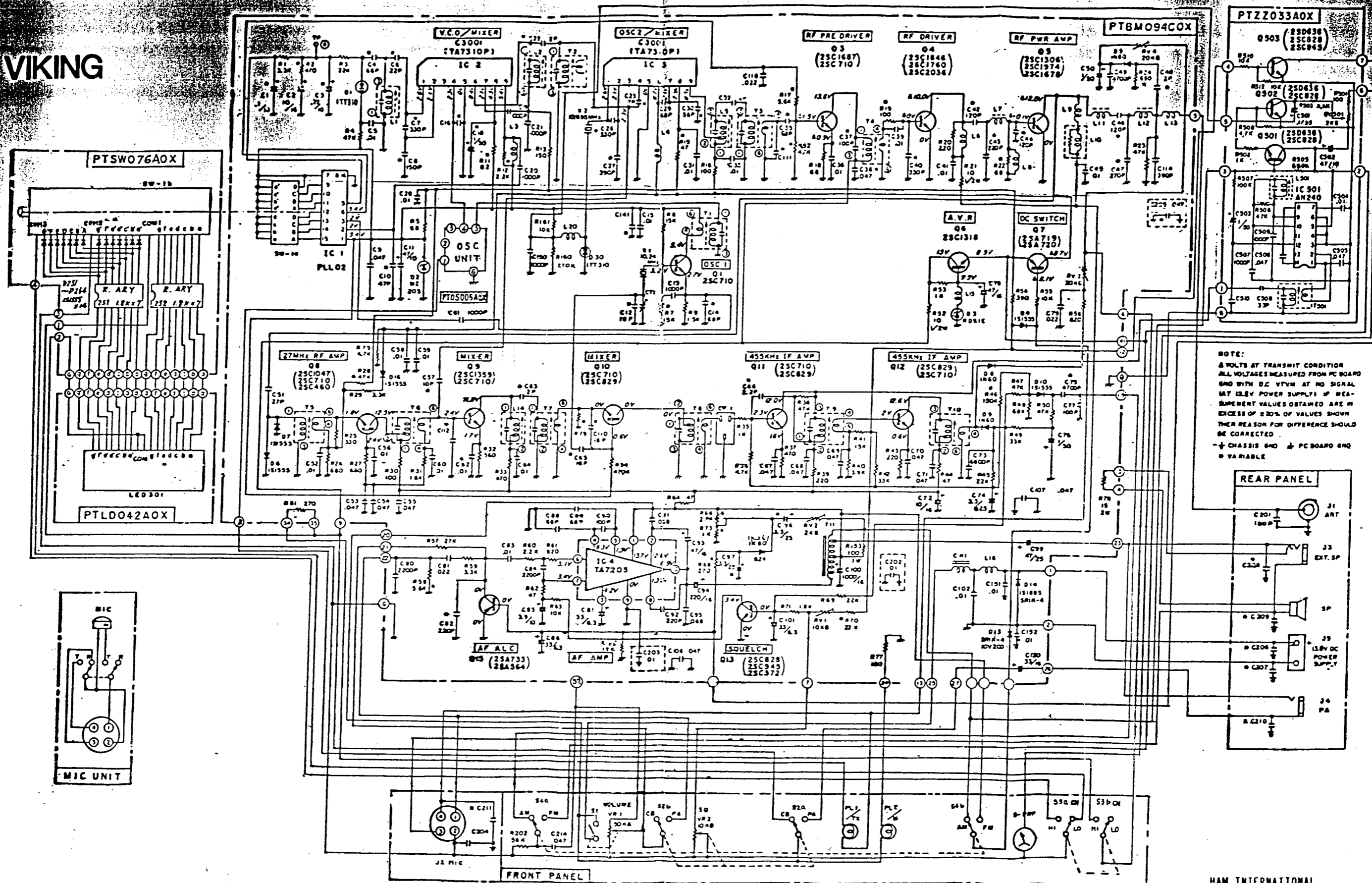
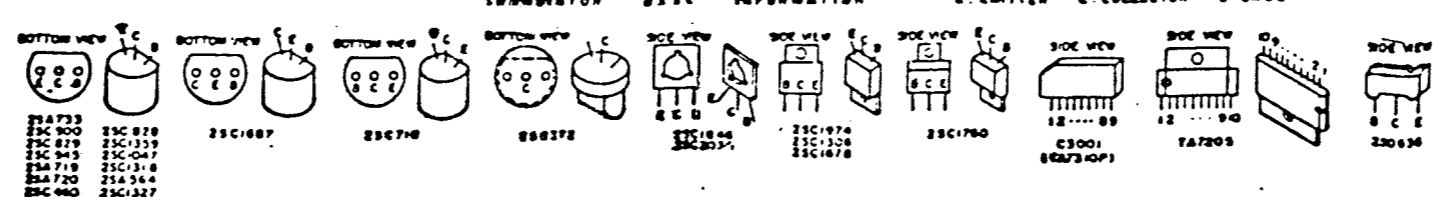
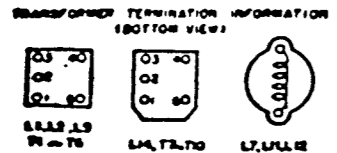
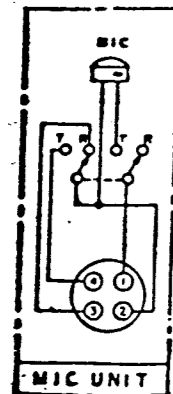


Schematic Diagram

VIKING



NOTE:
 ALL VOLTS AT TRANSMIT CONDITION
 ALL VOLTAGES MEASURED FROM PC BOARD
 GND WITH DC VTMV AT NO SIGNAL
 (AT 12.5V POWER SUPPLY) IF MEASUREMENT
 VALUES OBTAINED ARE IN EXCESS OF 20%
 OF VALUES SHOWN THE REASON FOR DIFFERENCE
 SHOULD BE CORRECTED
 - CHASSIS GND & PC BOARD GND
 IS VARIABLE



HAM INTERNATIONAL
 BRUSSELESTEEWEG 428
 B 9218 GENT BELGIUM
 TEL. (091) 31.21.11
 TLX. 12521 HAM B