

As you are now the owner of this document which should have come to you for free, please consider making a donation of £1 or more for the upkeep of the (Radar) website which holds this document. I give my time for free, but it costs me money to bring this document to you. You can donate here <https://blunham.com/Radar>

Do not upload this copyright pdf document to any other website. Breaching copyright may result in a criminal conviction and large payment for Royalties.

This Acrobat document was generated by me, Colin Hinson, from a document held by the me and believed to be out of copyright. It is presented here (for free) and this pdf version of the document is my copyright in much the same way as a photograph would be. If you believe the document to be under other copyright, please contact me.

The document should have been downloaded from my website <https://blunham.com/Radar>, or any mirror site named on that site. If you downloaded it from elsewhere, please let me know (particularly if you were charged for it). You can contact me via my Genuki email page: <https://www.genuki.org.uk/big/eng/YKS/various?recipient=colin>

You may not copy the file for onward transmission of the data nor attempt to make monetary gain by the use of these files. If you want someone else to have a copy of the file, point them at the website (<https://blunham.com/Radar>). Please do not point them at the file itself as it may move or the site may be updated.

It should be noted that most of the pages in this document are identifiable as having been processed by me.

I put a lot of time into producing these files which is why you are met with this page when you open the file.

In order to generate this file, I need to scan the pages, split the double pages and remove any edge marks such as punch holes, clean up the pages, set the relevant pages to be all the same size and alignment. I then run Omnipage (OCR) to generate the searchable text and then generate the pdf file.

Hopefully after all that, I end up with a presentable file. If you find missing pages, pages in the wrong order, anything else wrong with the file or simply want to make a comment, please drop me a line (see above).

If you find the file(s) of use to you, you might like to make a donation for the upkeep of the website – see <https://blunham.com/Radar> for a link to do so.

Colin Hinson

In the village of Blunham, Bedfordshire, UK.

TEKTRONIX®



P6075A
PROBE

INSTRUCTION MANUAL

Tektronix, Inc.
P.O. Box 500
Beaverton, Oregon 97005

Serial Number _____

WARRANTY

All TEKTRONIX instruments are warranted against defective materials and workmanship for one year. Any questions with respect to the warranty should be taken up with your TEKTRONIX Field Engineer or representative.

All requests for repair and replacement parts should be directed to the TEKTRONIX Field Office or representative in your area. This will assure you the fastest possible service. Please include the instrument Type Number or Part Number and Serial Number with all requests for parts or service.

Specifications and price change privileges reserved.

Copyright © 1973 by Tektronix, Inc., Beaverton, Oregon. Printed in the United States of America. All rights reserved. Contents of this publication may not be reproduced in any form without permission of Tektronix, Inc.

U.S.A. and Foreign TEKTRONIX products covered by U.S. and foreign patents and/or patents pending.

TEKTRONIX is a registered trademark of Tektronix, Inc.

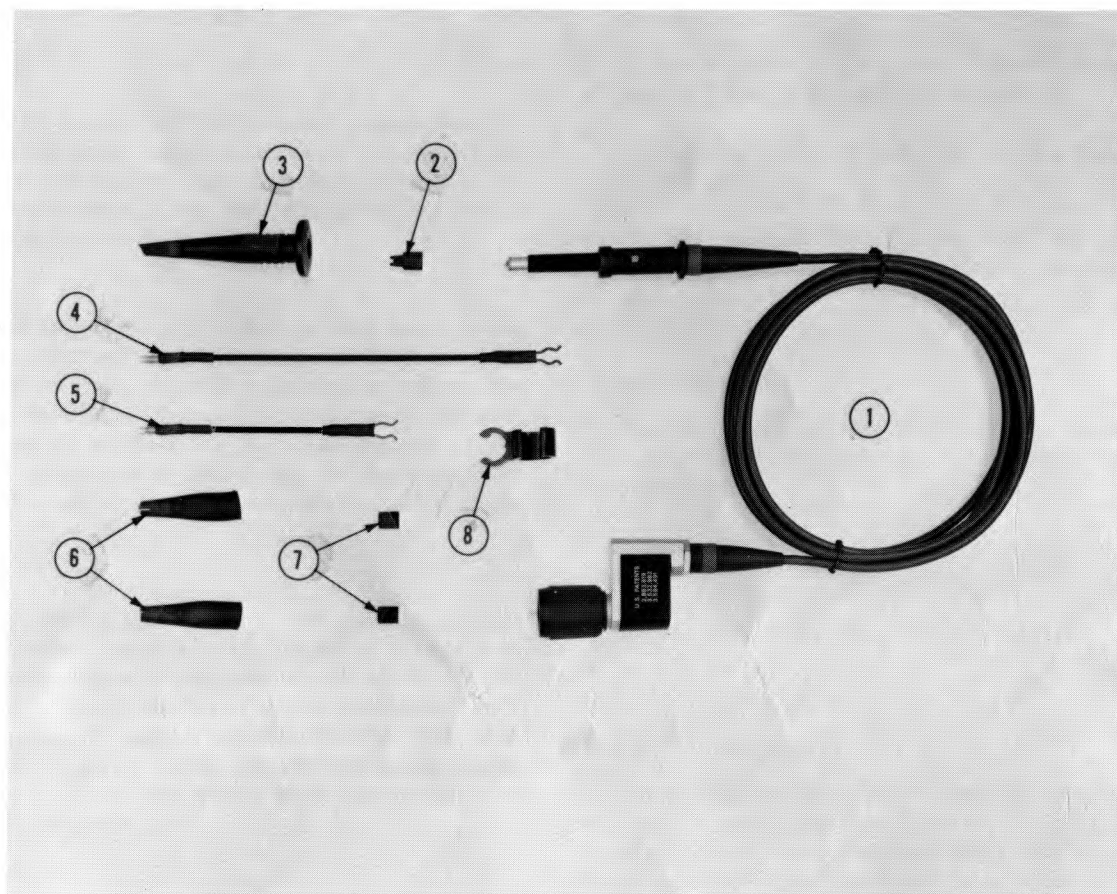


Fig. 1. P6075A Probe and Standard Accessories.

Fig. & Index No.	Tektronix Part No.	Serial/Model No. Eff Dscont	Qty	1	2	3	4	5	Name & Description	Mfr Code	Mfr Part Number
1-	010-6075-13		1						PROBE PACKAGE:P6075A,6 FOOT	80009	010-6075-13
-	- - - - -		-						PROBE PACKAGE INCLUDES:		
-1	010-6075-12		1						PROBE:P6075A,6 FOOT WITH IC TIP	80009	010-6075-12
-2	015-0201-00		1						TIP,PROBE:IC TEST (INCLUDED W/PROBE)	80009	015-0201-00
-3	013-0107-03		1						TIP,PROBE:RETRACTABLE HOOK ASSY W/FLANGE	80009	013-0107-03
-4	175-0124-01		1						LEAD,ELECTRICAL:GROUND,5 INCHES LONG	80009	175-0124-01
-5	175-0263-01		1						LEAD,ELECTRICAL:GROUND,3 INCHES LONG	80009	175-0263-01
-6	344-0046-00		2						CLIP,ELECTRICAL:ALLIGATOR TYPE W/COVER	80009	344-0046-00
-7	166-0404-01		2						INS,SLEEVE ELEC:PLASTIC	80009	166-0404-01
-8	352-0234-00		1						HOLDER,PROBE:PLASTIC	80009	352-0234-00

P6075A PROBE

CHARACTERISTICS

Description

The P6075A Probe is a 6 foot miniature passive, fast-rise, 10X attenuation probe, designed primarily for use with the TEKTRONIX 475 Oscilloscopes. The close tolerance probe resistor nearly eliminates the cascading of errors usually associated with attenuator probes.

A ground reference pushbutton on the body of the probe permits the user to obtain a ground reference or to determine which trace of a multitrace display includes the signal from the P6075A Probe. A coding ring on the BNC output connector actuates the Volts/Div readout of the oscilloscope mainframe to include the 10X attenuation of the probe. The connector is compatible with all BNC input connectors.

The compensating box houses a network that provides optimum transient response when the probe is used with wideband oscilloscopes. The probe can be low-frequency compensated to match the input of the associated instrument by adjusting the variable capacitor through the hole in the compensating box housing. The P6075A probe may be identified by a red colored plastic band around the cable boot at each end of the cable.

SPECIFICATIONS¹

Electrical

Attenuation: 10X within 2%.

Input Resistance: 10 M Ω within 0.5%

Input Capacitance: 12.5 pF.

Compensation Range: Adjustable to match a nominal input capacitance of 20 pF.

Bandwidth (–3 dB): \cong 200 MHz.

Maximum Input Voltage: 500 V (DC + Peak AC), derated with frequency. See Derating curves.

General

Weight: With 6 foot (1.8 meters) cable; \cong 5 ounces (141.7 grams) net, probe and accessories.

(141.7 grams) net probe and accessories.

¹Specified with Type 475.

Dimensions:

Probe Body: \cong 3.7 inches (9.4 cm), length. \cong 0.45 inch (1.1 cm), maximum outside diameter.

Cable: Length; \cong 6 feet (1.8 meters), between strain relief bases.

Compensation Box: Length; \cong 1.7 inches (4.3 cm). Width; \cong 0.6 inch (1.5 cm). Height; \cong 1.2 inches (3.0 cm).

Environmental

The probe will operate within specifications over the following ranges; Temperature, -15°C to $+75^{\circ}\text{C}$. Altitude, to 15,000 feet.

OPERATING INSTRUCTIONS²

Probe Compensation

Due to slight variations in the input capacitance between oscilloscope input amplifiers (even on the same type), it is usually necessary to compensate the probe whenever it is transferred from one instrument to another, or from one channel to another of dual (multi-trace) units. Improper compensation will produce waveshape distortion and/or amplitude measurement error of the display. See Compensation Procedure for method of adjustment.

Circuit Loading

Although the DC input resistance of the P6075A is 10 M Ω , it can load any high-impedance circuit it is connected into, and distort the true waveform present. To minimize this loading effect, select the lowest impedance points to check waveform. As signal frequency increases, the equivalent probe input impedance decreases because of the input capacitance of the probe. Therefore, the probe loading increases with frequency. Fig. 2 shows R_p and X_p as a function of frequency. These curves should be referred to when making measurements of high frequency signals, especially in high impedance circuits.

²Measurement Concept Booklet; Probe Measurements, TEKTRONIX Part Number 062-1120-00 is a recommended treatise on probe use and measurement evaluation.

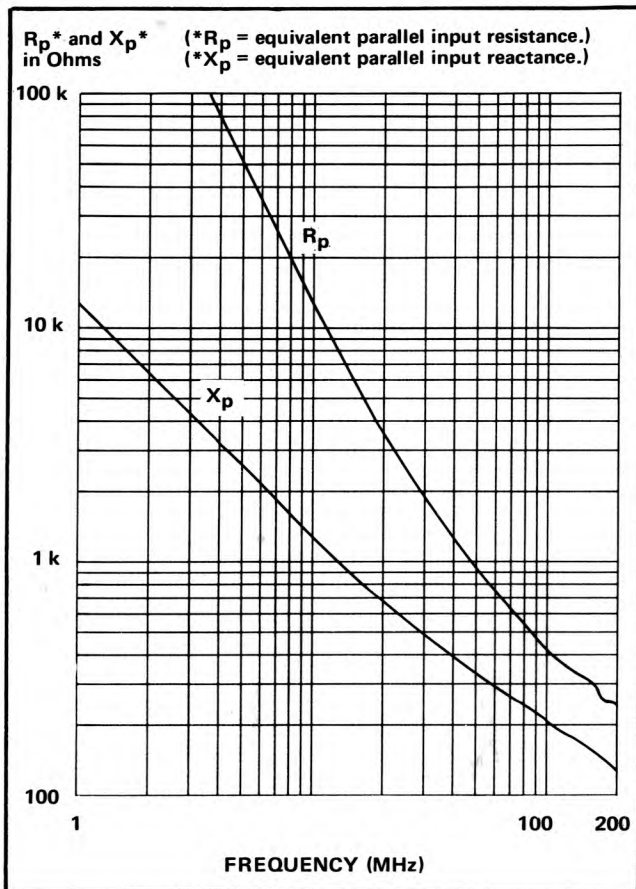
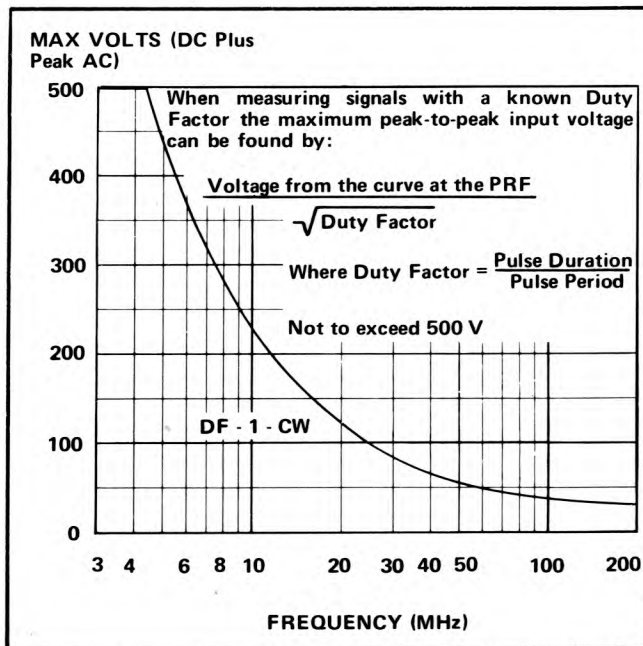
Fig. 2. P6075A Probe typical X_p , R_p versus frequency curves.

Fig. 3. P6075A Probe, typical voltage rating with frequency curve.

Maximum Input Voltage

The maximum allowable input voltage of the P6075A Probe is 500 V (DC + Peak AC) at the low-frequency end of its range. As signal frequency increases, input capacitive reactance decreases and the maximum safe input voltage decreases. Fig. 3 shows the typical voltage derating vs frequency curve.

Probe Grounding

A passive probe such as the P6075A is a capacitive divider for high-frequency components. An inductance introduced by a long signal or ground lead will form a series resonant circuit which will "ring" if driven by a signal containing significant frequency components at or above circuit resonance. These oscillations can appear on the oscilloscope display and distort the true waveform.

Ground leads and probe tip connections should be kept as short as possible to maintain the best fidelity.

MAINTENANCE

General

The P6075A Probe is built to withstand normal usage, but may be damaged if treated carelessly. Avoid kinking or straining the cable or subjecting the probe to extreme environmental conditions. When not in use, the probe should be stored in a drawer, or supported by the plastic holder supplied with the probe.

If the probe is damaged, replacement parts are available through your local TEKTRONIX Field Office or representative. The mechanical and electrical parts lists at the rear of this manual provide the TEKTRONIX part numbers and descriptions for the components.

Substitution of non-standard parts is not advisable if the original performance is to be restored. Even shortening the cable by more than a few percent will have a noticeable effect on the transient response of the probe. The resistive center conductor has been specifically selected for critical dampening of reflections that would otherwise exist.

Connector Replacement

1. Remove the snap-fit cover on the compensation box.
2. Unsolder the center conductor from the connector to the circuit board. Tilt the board back away from the connector while applying heat to the conductor to achieve separation.

3. Loosen the 7/16-inch nut (part of the connector), unscrew, and remove the connector.

4. Install the new connector, performing steps 1 through 3 above in reverse order. Keep board tilted back away from the connector until the 7/16-inch nut is tightened.

Cable Replacement

1. Remove the snap-fit cover on the compensation box.
2. Unsolder the cable center conductor from the circuit board.
3. Remove the 7/16-inch cable bushing from the compensation box.
4. Unscrew the probe body from the cable.
5. Unsolder the cable center conductor from the resistor/capacitor lead (located in the probe head).
6. Pull the resistor/capacitor assembly from the holder.
7. Insert the resistor/capacitor assembly into the holder of the new probe cable and re-assemble the probe, reversing the procedure given in steps 1 through 6.

COMPENSATION PROCEDURE

(a) Touch the probe tip to the oscilloscope calibrator output connector and set the Volts/Div and Time/Div controls so that several cycles of the calibrator squarewave are displayed with an amplitude of approximately one-half the screen height.

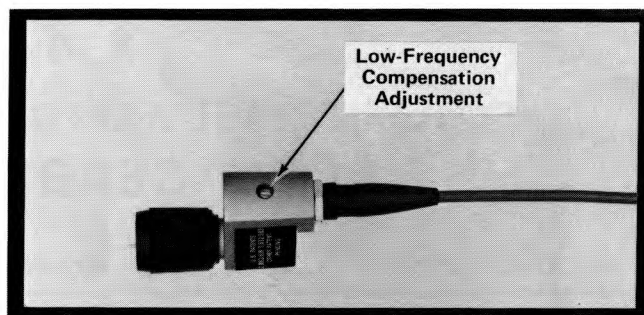


Fig. 4. Location of probe compensation adjustment.

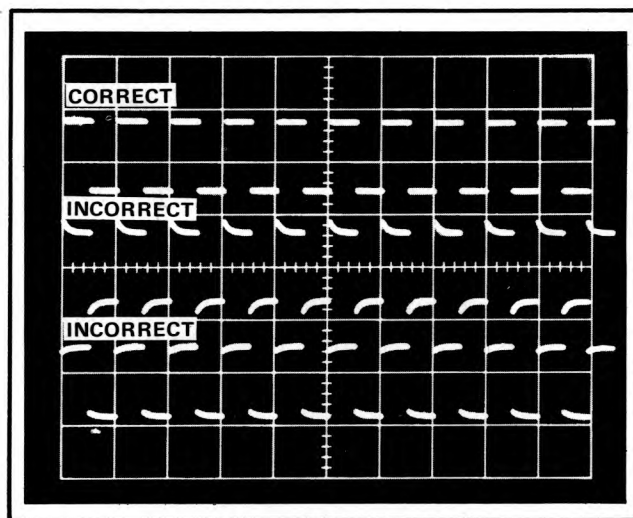


Fig. 5. Probe compensation.

(b) Adjust the probe compensation (Fig. 4) through the access hole in the compensation box, for optimum pulse flat top. Fig. 5 illustrates the correct and incorrect squarewave response.

REPLACEABLE PARTS LIST

PARTS ORDERING INFORMATION

Replacement parts are available from or through your local Tektronix, Inc. Field Office or representative.

Changes to Tektronix instruments are sometimes made to accommodate improved components as they become available, and to give you the benefit of the latest circuit improvements developed in our engineering department. It is therefore important, when ordering parts, to include the following information in your order: Part number, instrument type or number, serial number, and modification number if applicable.

If a part you have ordered has been replaced with a new or improved part, your local Tektronix, Inc. Field Office or representative will contact you concerning any change in part number.

Change information, if any, is located at the rear of this manual.

SPECIAL NOTES AND SYMBOLS

X000 Part first added at this serial number
00X Part removed after this serial number

FIGURE AND INDEX NUMBERS

Items in this section are referenced by figure and index numbers to the illustrations.

INDENTATION SYSTEM

This mechanical parts list is indented to indicate item relationships. Following is an example of the indentation system used in the description column.

1 2 3 4

Assembly and/or Component

Attaching parts for Assembly and/or Component

Detail Part of Assembly and/or Component

Attaching parts for Detail Part

Parts of Detail Part

Attaching parts for Parts of Detail Part

Attaching Parts always appear in the same indentation as the item it mounts, while the detail parts are indented to the right. Indented items are part of, and included with, the next higher indentation. The separation symbol - - - * - - - indicates the end of attaching parts.

Attaching parts must be purchased separately, unless otherwise specified.

ITEM NAME

In the Parts List, an Item Name is separated from the description by a colon (:). Because of space limitations, an Item Name may sometimes appear as incomplete. For further Item Name identification, the U.S. Federal Cataloging Handbook H6-1 can be utilized where possible.

CROSS INDEX

MFR. CODE NUMBER TO MANUFACTURER

MFR.CODE	MANUFACTURER	ADDRESS	CITY,STATE,ZIP
01121	Allen-Bradley Co.	1201 2nd St.	Milwaukee, WI 53212
19701	Electra/Midland Corp., A North American Phillips Co.	P. O. Box 760	Mineral Wells, TX 76067
72982	Erie Technological Products, Inc.	644 W. 12th St.	Erie, PA 16512
73743	Fischer Special Mfg. Co.	446 Morgan St.	Cincinnati, OH 45206
73899	JFD Electronics Corp.	15th at 62nd St.	Brooklyn, NY 11219
75042	TRW Electronic Components, IRC Philadelphia Div.	401 N. Broad St.	Philadelphia, PA 19108
80009	Tektronix, Inc.	P. O. Box 500	Beaverton, OR 97005
83385	Central Screw Co.	2530 Crescent Dr.	Broadview, IL 60153

SYMBOLS and REFERENCE DESIGNATORS

Electrical components shown on the diagrams are in the following units unless noted otherwise:

Capacitors= Values one or greater are in picofarads (PF).

Values less than one are in microfarads (UF).

Resistors= Ohms.

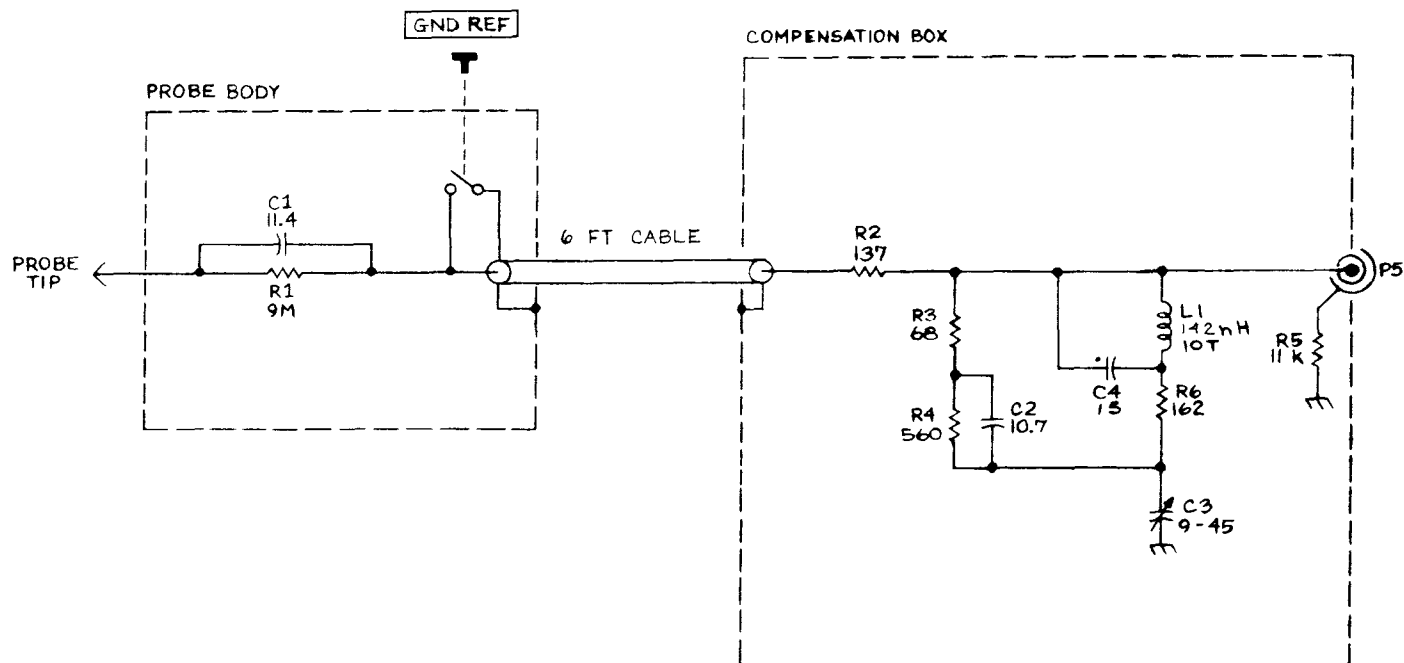
The following prefix letters are used as reference designators to identify components or assemblies on the diagrams.

C Capacitor, fixed or variable
 L Inductor, fixed or variable
 LR Inductor/resistor combination
 R Resistor, fixed or variable

ABBREVIATIONS

ASSY	ASSEMBLY	ID	INSIDE DIAMETER
BRS	BRASS	INS	INSULATED
CAP	CAPACITOR	MKR	MARKER
CER	CERAMIC	MTG	MOUNTING
CKT	CIRCUIT	OBD	ORDER BY DESCRIPTION
CMPSN	COMPOSITION	OD	OUTSIDE DIAMETER
COMP	COMPENSATION	P BRZ	PHOSPHOR BRONZE
CONN	CONNECTOR	RCPT	RECEPTACLE
ELEC	ELECTRICAL	RES	RESISTOR
FXD	FIXED	TECH	TECHNICAL
HEX	HEXAGON	VAR	VARIABLE
IC	INTEGRATED CIRCUIT	W/	WITH

ELECTRICAL PARTS LIST

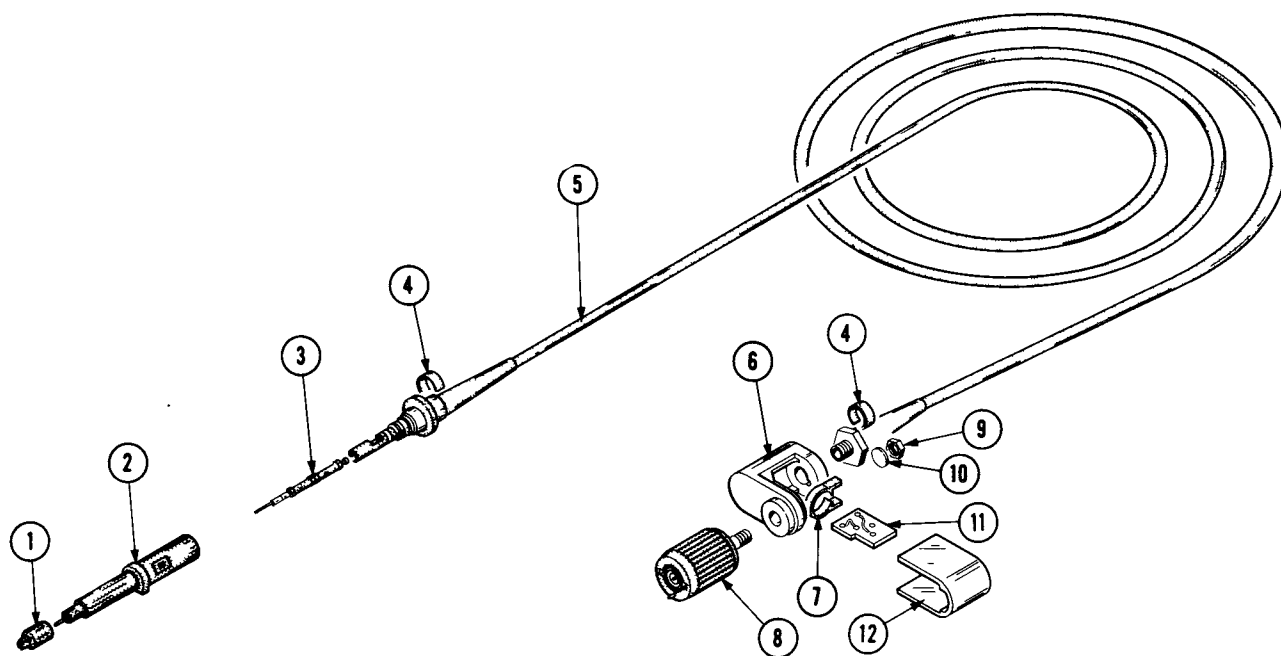


P6075A 10X PROBE

Ckt No.	Tektronix Part No.	Serial/Model No. Eff	Dscont	Name & Description	Mfr Code	Mfr Part Number
A	670-2437-00			CKT BOARD ASSY:	80009	670-2437-00
C1 ¹	- - - - -			CAP.,FXD,CER DI:11.4PF,1%,500V		
C2	281-0715-00			CAP.,FXD,CER DI:10.7PF,1%,500V	72982	374-005C0G1079F
C3	281-0167-00			CAP.,VAR,CER DI:9-45PF,200V	73899	DVJ-533
C4	281-0617-00			CAP.,FXD,CER DI:15PF,10%,200V	72982	374-001C0G0150K
L1	108-0739-00			COIL,FXD:142NH	80009	108-0739-00
R1 ¹	- - - - -			RES.,FXD,FILM:9M OHM,0.1%,0.25W		
R2	321-0110-00			RES.,FXD,FILM:137 OHM,1%,0.125W	75042	CEAT0-1370F
R3	317-0680-00			RES.,FXD,CMPSN:68 OHM,5%,0.125W	01121	BB6805
R4	315-0561-00			RES.,FXD,CMPSN:560 OHM,5%,0.125W	01121	BB5615
R5	317-0113-00			RES.,FXD,CMPSN:11K OHM,5%,0.125W	01121	BB1135
R6	321-0117-00			RES.,FXD,FILM:162 OHM,1%,0.125W	75042	CEAT0-1620F

¹Available as assembly 206-0204-00 only.

MECHANICAL PARTS LIST



Index No.	Tektronix Part No.	Serial/Model No. Eff	Discont	Qty	1	2	3	4	5	Name & Description	Mfr Code	Mfr Part Number
	010-6075-12			1						PROBE:P6075A, 6 FOOT	80009	010-6075-12
	- - - - -			-						PROBE INCLUDES:		
-1	015-0201-00			1						TIP, PROBE: IC TEST	80009	015-0201-00
-2	204-0579-02			1						BODY ASSEMBLY: PROBE	80009	204-0579-02
-3	206-0204-00			1						ATTENUATOR ASSY: (FOR 6 FOOT ONLY)	80009	206-0204-00
-4	334-1636-01			2						BAND, MKR, CABLE: RED	80009	334-1636-01
-5	175-1383-00			1						CABLE ASSEMBLY: (FOR 6 FOOT ONLY)	80009	175-1383-00
-6	426-0690-04			1						FRAME, HSG ASSY: COMPENSATION BOX	80009	426-0690-04
-7	354-0396-00			1						RING, CAP., MTG:	80009	354-0396-00
-8	131-1070-00			1						CONN, RCPT, ELEC: WITH READOUT PIN (ATTACHING PARTS)	80009	131-1070-00
-9	220-0572-00			1						NUT, PLAIN, HEX: 10-32 X 0.25 INCH, BRS	73743	OBD
-10	210-0056-00			1						WASHER, LOCK: SPLIT, 0.1951D X 0.32" OD, P BRZ	83385	OBD
										- - - * - - -		
-11	670-2437-00			1						CKT BOARD ASSY:	80009	670-2437-00
-12	200-1158-11			1						COVER, COMP: (FOR 6 FOOT ONLY)	80009	200-1158-11
	070-1597-00			1						MANUAL, TECH: (NOT SHOWN)	80009	070-1597-00